



Sabre RL DX Releaser Tool

User's Guide

This document provides information on the Setup, Configuration and Operation of the **Sabre RL DX Releaser Tool**.

© 2019, Sabre GLBL Inc. All rights reserved.

This documentation is the confidential and proprietary intellectual property of Sabre GLBL Inc. Any unauthorized use, reproduction, preparation of derivative works, performance, or display of this document, or software represented by this document, without the express written permission of Sabre GLBL Inc. is strictly prohibited.

Sabre and the Sabre logo design are trademarks and/or service marks of an affiliate of Sabre GLBL Inc. All other trademarks, service marks, and trade names are owned by their respective companies.

Contents

General Information..... 1

1.1 Purpose 1

1.2 Supported Operating Systems 2

Operation 3

2.1 Usage 3

2.1.1 Prerequisites 3

2.1.2 Criteria 3

2.1.3 Setup..... 4

2.1.4 Configuration..... 8

2.1.5 Operation 9

General Information

1

1.1 Purpose

This document provides detailed information on the Setup, Configuration and Operation of the **Sabre RL DX Releaser Tool**.

The **Sabre RL DX Releaser Tool** provides automated assistance to keep SJPM configured LNIATA's LMT Queues active and operating in cases where a network outage or loss of Internet connectivity may have caused the Queues to be put on hold. In cases where the operation is not monitored, the **Sabre RL DX Releaser Tool** can assist to keep messages flowing without being held up in the Queues, keeping operations online and operational.

The **Sabre RL DX Releaser Tool** connects to Sabre and sends Printer and/or IUR Release Commands at regular time intervals determined by parameters passed at startup.

1.2 Supported Operating Systems

The **Sabre RL DX Releaser Tool** has been tested for use with the Operating Systems listed below. If the Operating System is not listed below then it **IS NOT** supported at this time.

However, the **Sabre RL DX Releaser Tool** should work on any Operating System capable of DOS commands.

Supported Operating Systems:

- **Windows 7-64 Bit**
- **Windows 8.1-64 Bit**
- **Windows 10-64 Bit**
- **Linux**

2.1 Usage

These Sections describe the Setup, Configuration and Operation of the **Sabre RL DX Releaser Tool**.

Note: These Sections assume the operator has technical knowledge of **DOS** and **Command Prompt** operations.

2.1.1 Prerequisites

Software:

- ❖ **Sabre RL DX Releaser Tool** zip file (e.g. **Releaser-wIUR_XXXXXX.sabre.zip**), where “XXXXXX” is the **Sabre RL DX Releaser Tool**’s release date.
- ❖ **Java** version 1.8 or higher installed with **JAVA_HOME** Environment Variable added.

Hardware:

- ❖ **Computer** with connectivity to the Sabre Host.

2.1.2 Criteria

To use the **Sabre RL DX Releaser Tool** the following environmental configuration criteria must be met:

- ❖ The computer where the **Sabre RL DX Releaser Tool** is installed requires connectivity to the Sabre Host and to remain powered on for the tool to function.
- ❖ Java must be installed on the computer which will run the **Sabre RL DX Releaser Tool**. The **Sabre RL DX Releaser Tool** is compatible with Java version 1.8 or higher. The Environment Variable **JAVA_HOME** will need to be added with a path to the Java installation (e.g. "**C:\Program Files (x86)\Java\jdk1.8.0_25\jre**").
- ❖ The files that contain the Printer LNIATAS (“**printerTAs.txt**”) and IUR PCCS (“**IURPCCs.txt**”) must be in the **Sabre RL DX Releaser Tool**’s “**conf**” folder (e.g. “**C:\Sabre RL DX Releaser Tool\conf**”).

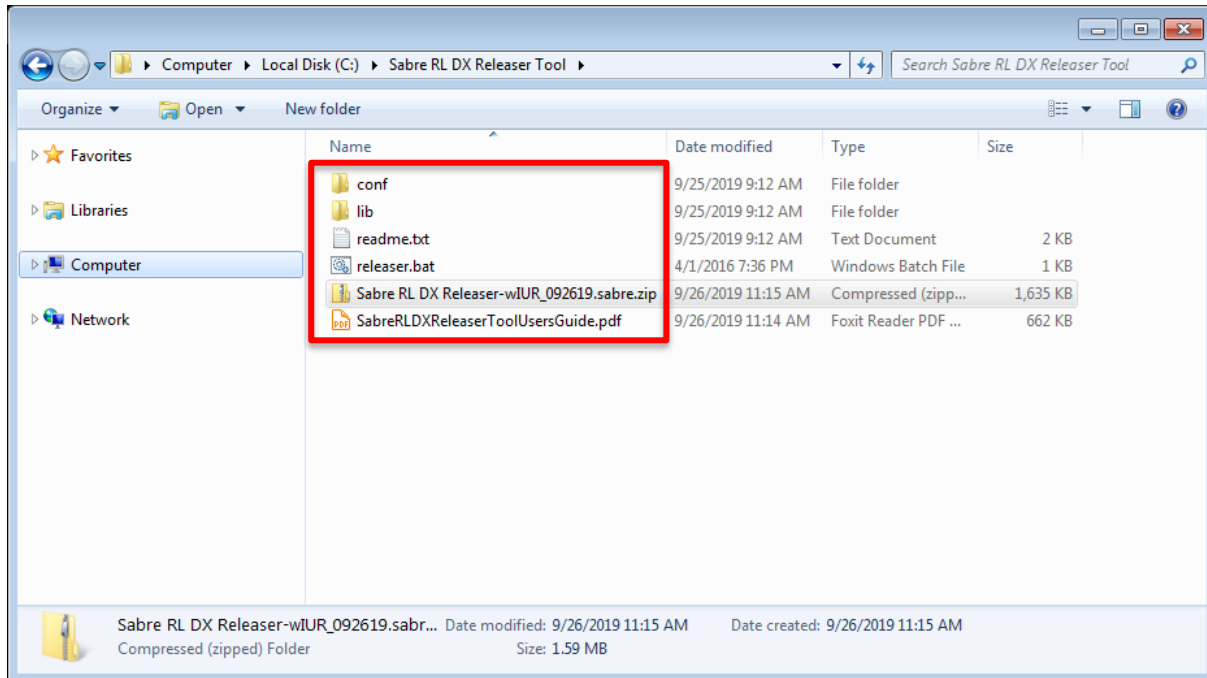
2.1.3 Setup

This Section describes the procedure to Setup the **Sabre RL DX Releaser Tool** on a Sabre Connected computer.

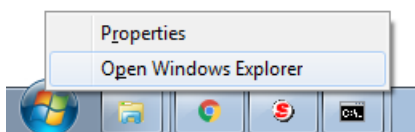
Important Note:

The computer where the **Sabre RL DX Releaser Tool** is installed requires connectivity to the Sabre Host and to remain powered on for the tool to function.

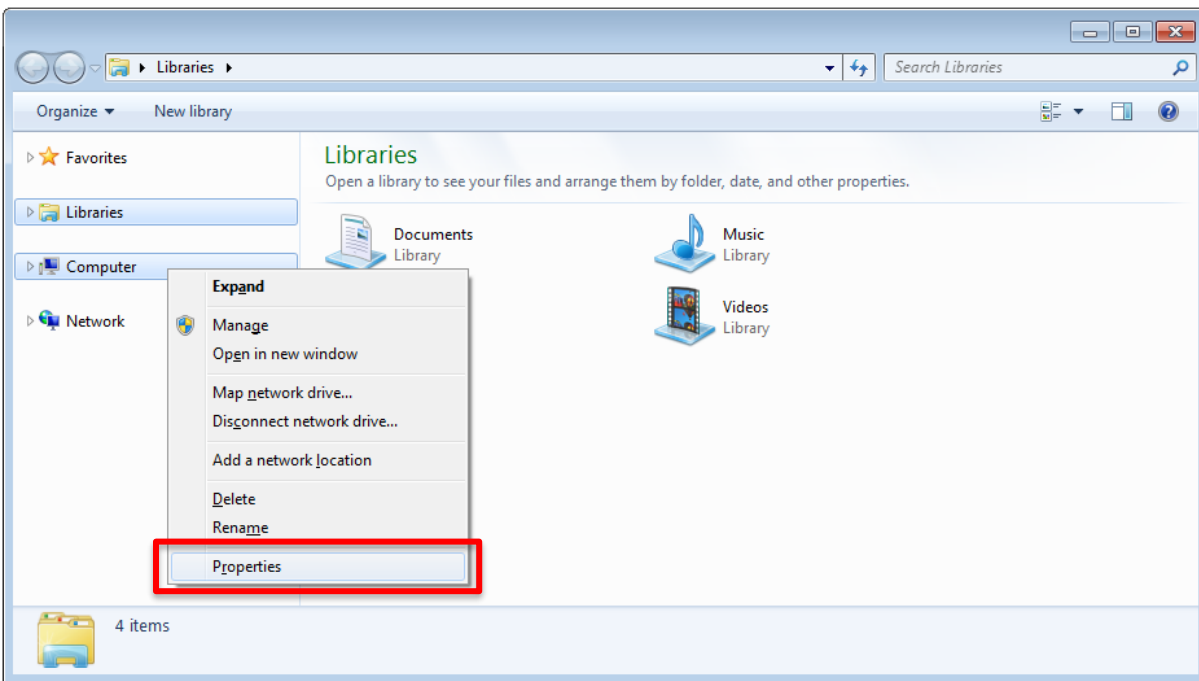
1. On a computer with Sabre connectivity, create a folder called “**Sabre RL DX Releaser Tool**” and copy the **Sabre RL DX Releaser Tool** zip file into it (e.g. “**Releaser-wIUR_XXXXXX.sabre.zip**”).
2. Unzip the **Sabre RL DX Releaser Tool** zip file. This will create the following folders and files.



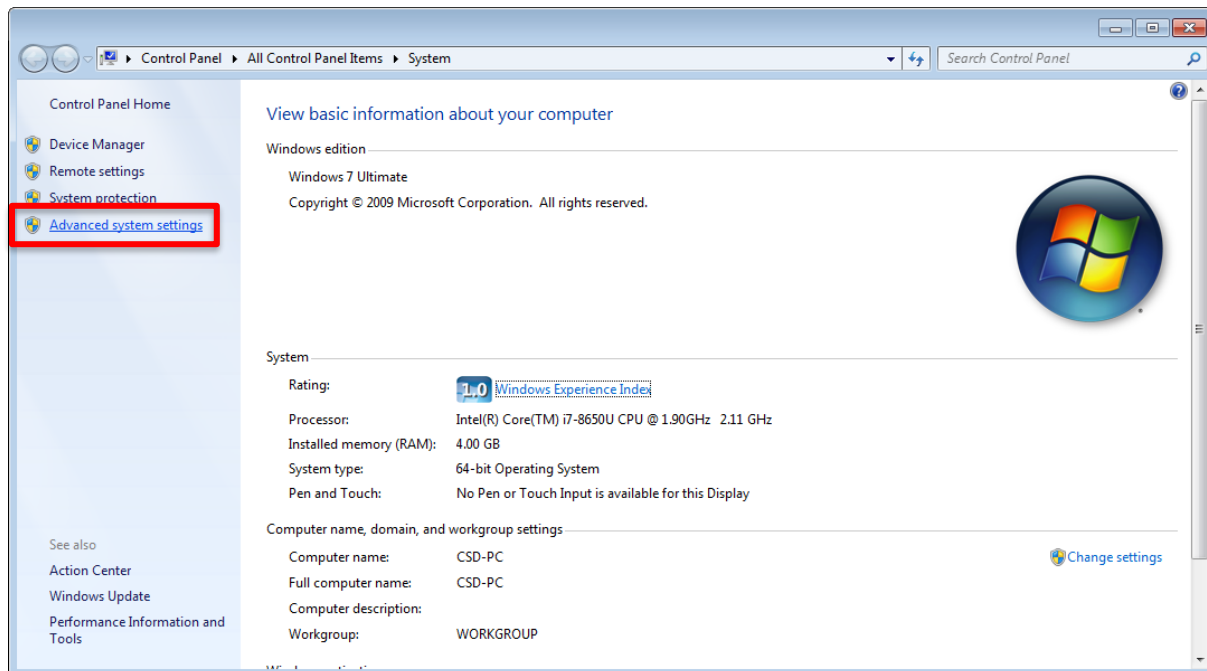
3. Right click on the Windows “**Start**” button and then click on the “**Open Windows Explorer**” menu item.



4. In Windows Explorer, right click on “**Computer**” and then click on the “**Properties**” menu item.

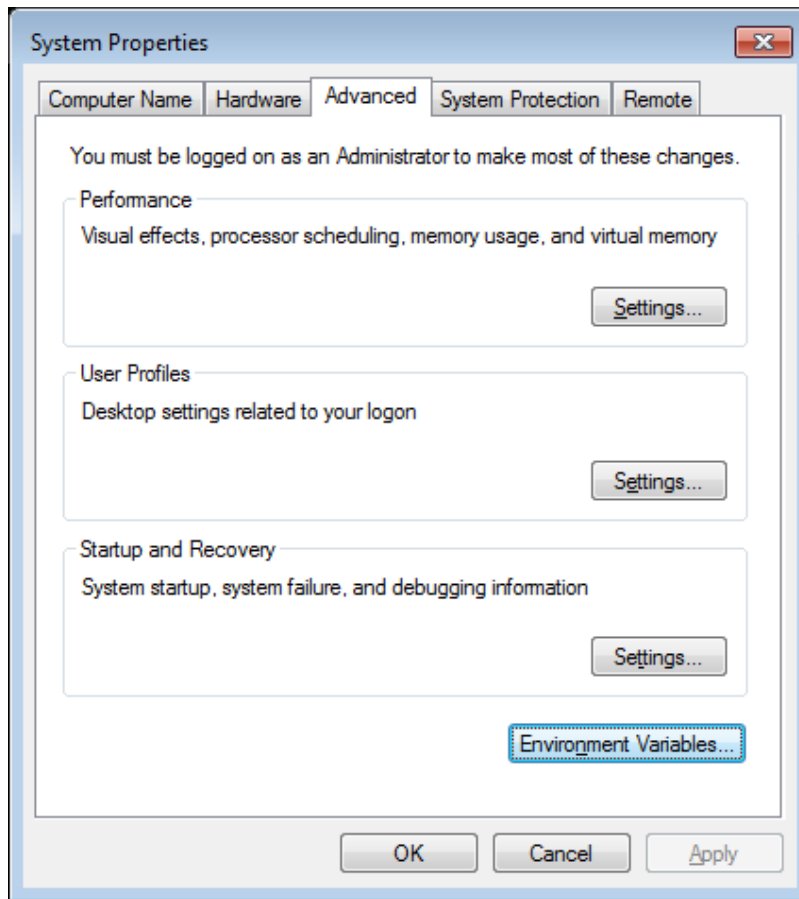


5. In the Control Panel, click on the “**Advanced system settings**” link at the left.

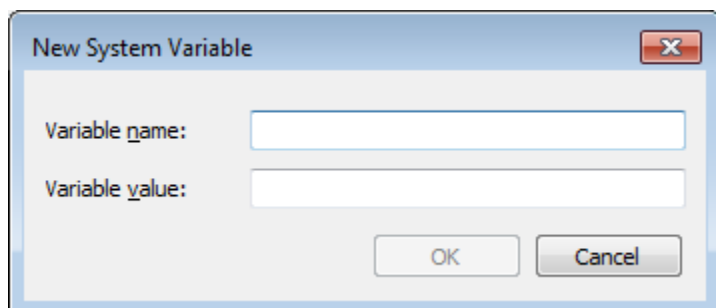
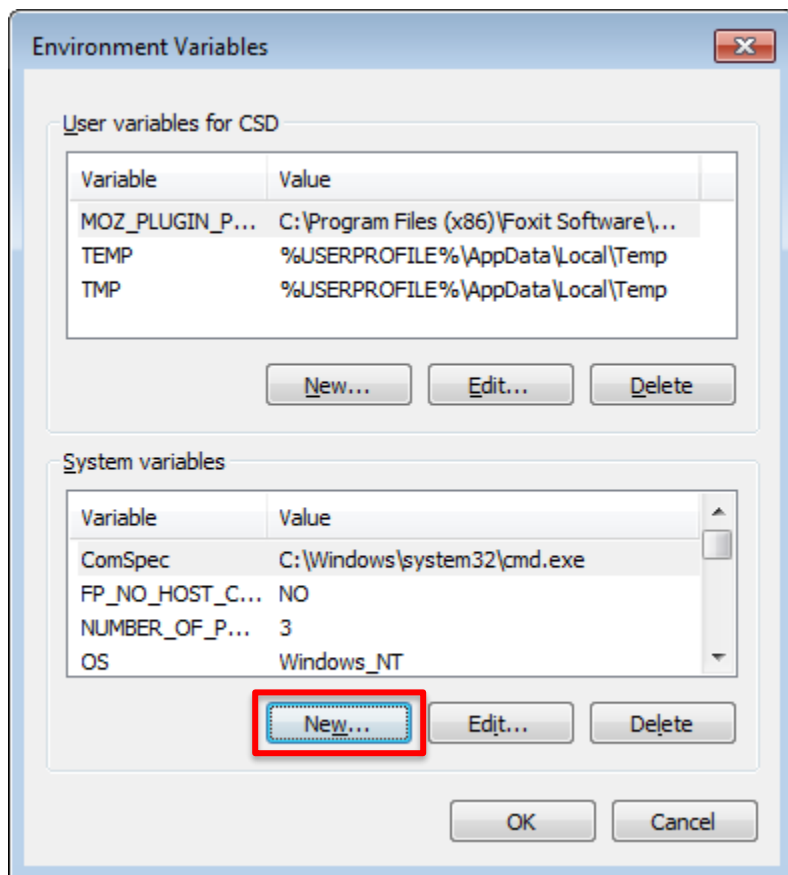


6. On the “**User Account Control**” window, click on the “**Yes**” button.

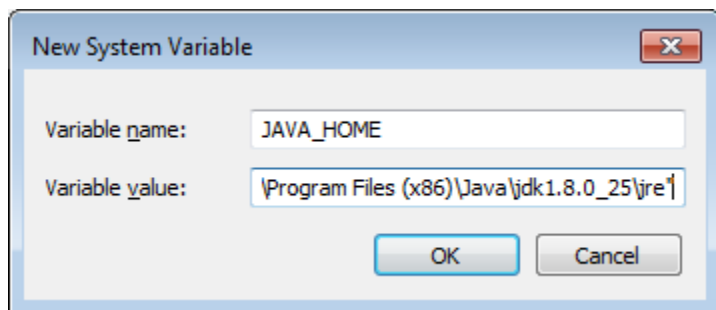
7. The “**System Properties**” window will appear, click on the “**Environment Variables...**” button.



8. The “**Environment Variables**” window will appear, click on the “**New...**” button under the “**System variables**” box. The “**New System Variable**” window will appear.



9. In the “**Variable name:**” field type in **JAVA_HOME**. In the “**Variable value:**” field type in the location of Java (e.g. "**C:\Program Files (x86)\Java\jdk1.8.0_25\jre**") and then click on the “**OK**” button.



10. On the “**Environment Variables**” window click on the “**OK**” button.
11. On the “**System Properties**” window click on the “**OK**” button and then close the Control Panel and Windows Explorer windows.

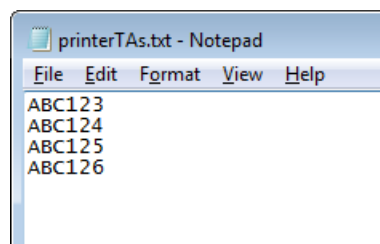
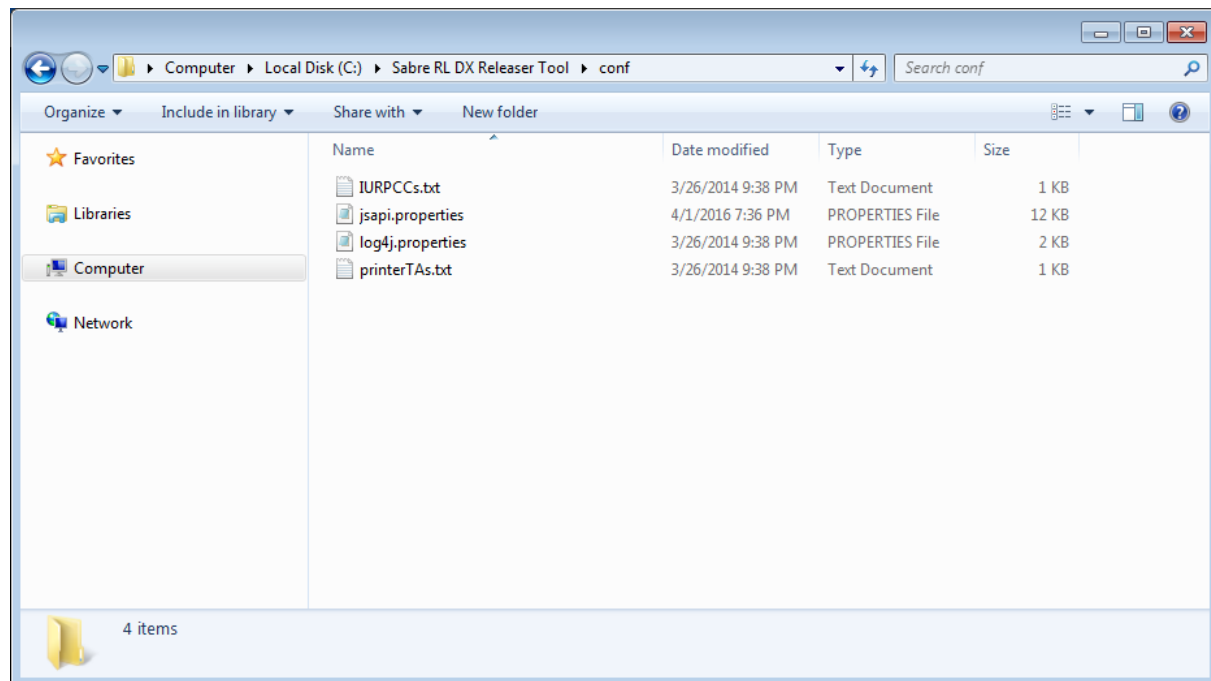
2.1.4 Configuration

This Section describes the configuration of the “**printerTAs.txt**” and “**IURPCCs.txt**” files for use with the **Sabre RL DX Releaser Tool**.

1. In Windows Explorer, navigate into the “**C:\Sabre RL DX Releaser Tool\conf**” folder. Open the “**printerTAs.txt**” file in a text editor, delete **ALL** its contents and then add the **Printer LNIATAs** to be released by the **Sabre RL DX Releaser Tool**. Save and close the file when done.

Important Note:

All letters entered into the “**printerTAs.txt**” and “**IURPCCs.txt**” files must be capitalized.



2. Open the “**IURPCCs.txt**” file in a text editor, delete **ALL** its contents and then add the **IUR PCCs** to be released by the **Sabre RL DX Releaser Tool**. Save and close the file when done.

2.1.5 Operation

This Section describes the operation of **Sabre RL DX Releaser Tool**.

Windows OS:

C:\Sabre RL DX Releaser Tool>releaser.bat [-t] [-l] [-s] [-n] [-f] [-m]

e.g.: C:\Sabre RL DX Releaser Tool>releaser.bat 1800 1111 A1B1 123ABC printerTAs.txt IURPCCs.txt

Linux OS:

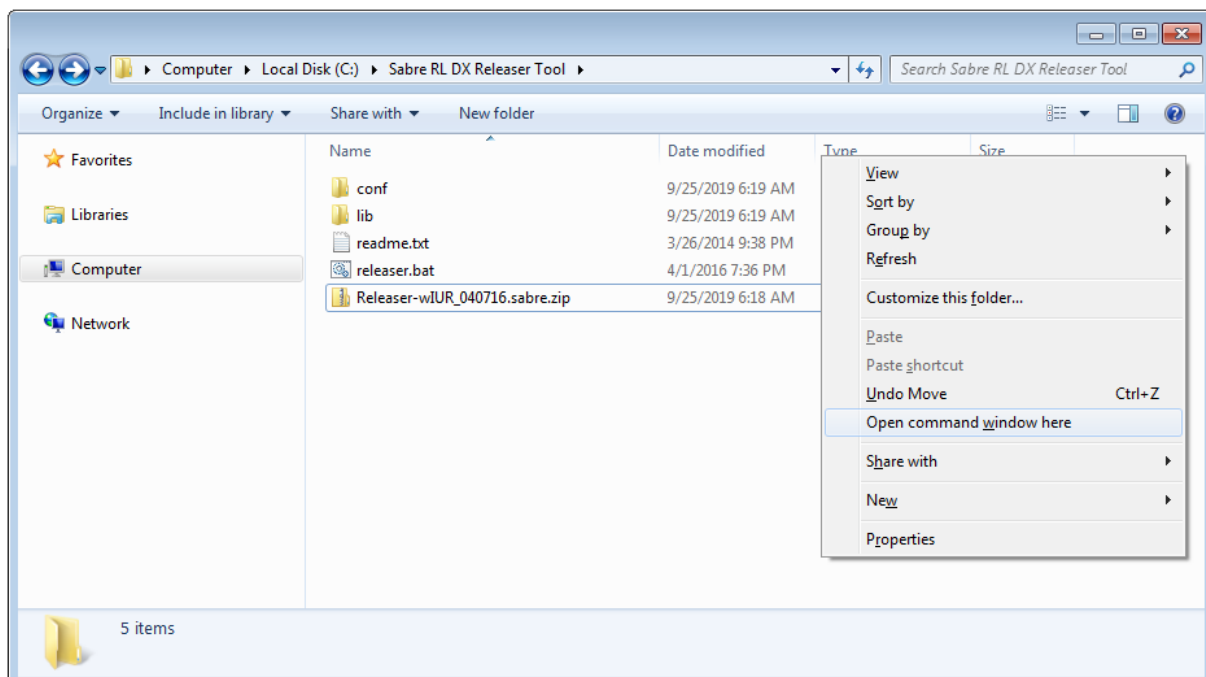
./releaser.sh [-t] [-l] [-s] [-n] [-f] [-m]

e.g.: ./releaser.sh 1800 1111 A1B1 123ABC printerTAs.txt

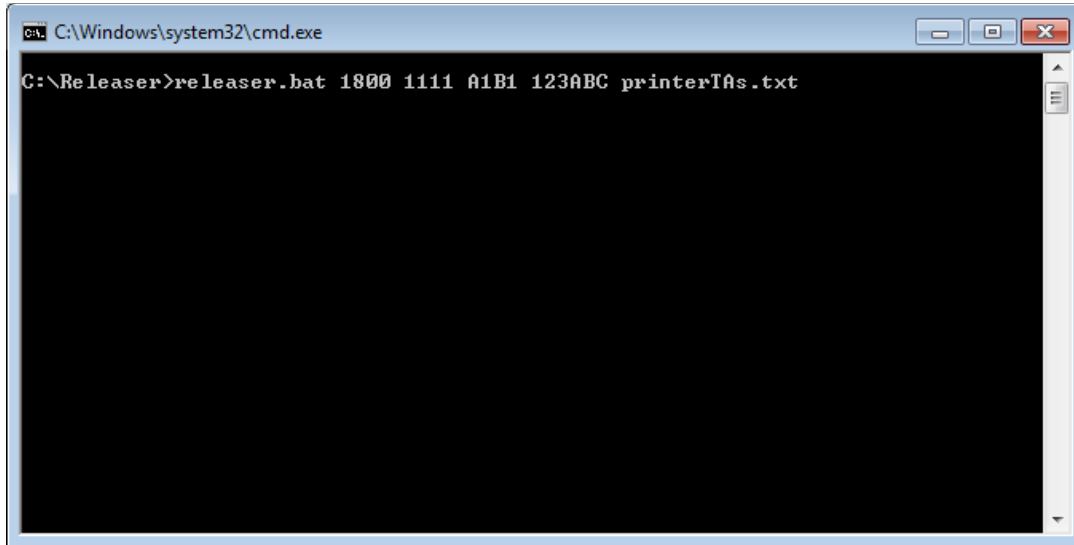
Where:

-t	Mandatory, used to specify the Time Interval , in seconds, between sending the Release Command.
-l	Mandatory, used to specify the Sabre Login ID to use to sign in and send the Release Command.
-s	Mandatory, used to specify the Sabre Suffix/PseudoCityCode for the Sabre Login ID .
-n	Mandatory, used to specify the LNIATA the user will connect with.
-f	Mandatory, used to specify the File Name of the text file that contains the list of Printer LNIATAs.
-m	Optional, used to specify the File Name of the text file that contains the list of IUR LNIATAs.

1. In Windows Explorer, navigate into the “C:\Sabre RL DX Releaser Tool” folder. Hold down the “**Shift**” key and then right click in the in the “C:\Sabre RL DX Releaser Tool” folder. Click on the “**Open command window here**” menu item.

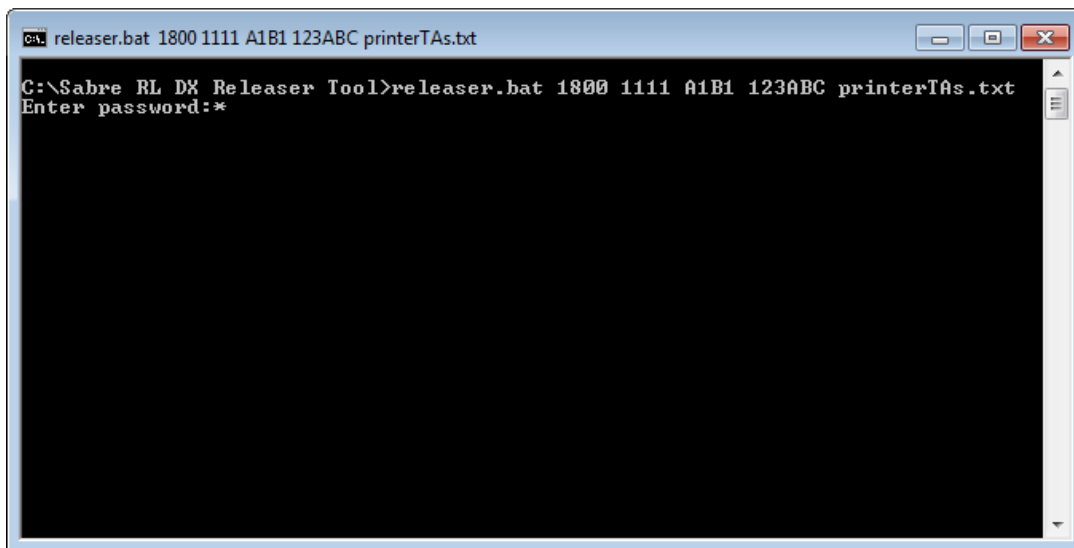


2. The Command window will appear. In the command window type in the following command line:
“**releaser.bat 1800 1111 A1B1 123ABC printerTAs.txt**” with your configuration settings and then press the
“**Enter**” key.



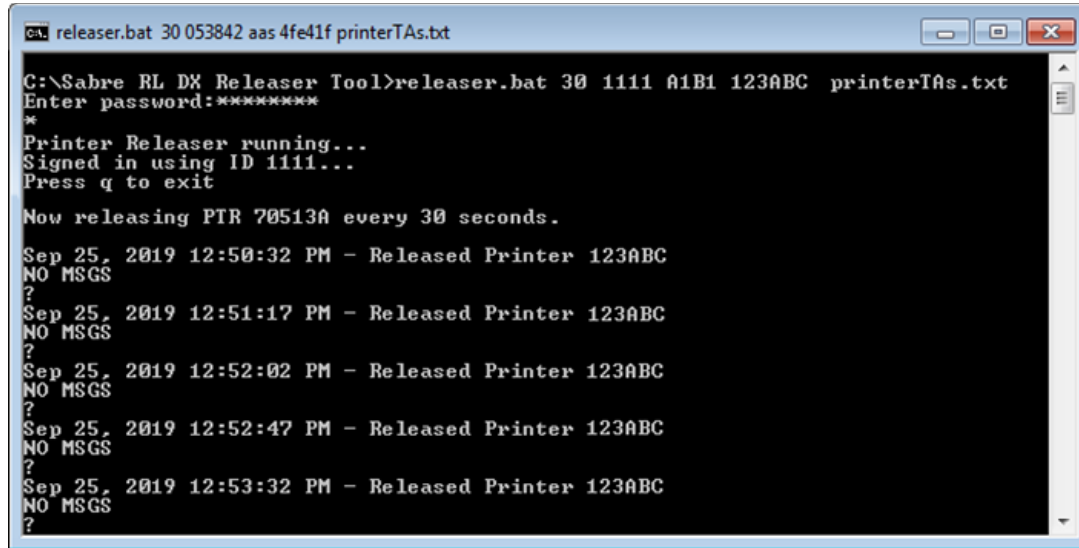
```
C:\Windows\system32\cmd.exe
C:\Releaser>releaser.bat 1800 1111 A1B1 123ABC printerTAs.txt
```

3. The “**Enter password:***” prompt will appear. Type in the Sabre password to be used with the **Sabre Login ID** specified and then press the “**Enter**” key.



```
releaser.bat 1800 1111 A1B1 123ABC printerTAs.txt
C:\Sabre RL DX Releaser Tool>releaser.bat 1800 1111 A1B1 123ABC printerTAs.txt
Enter password:*
```

4. The **Sabre RL DX Releaser Tool** will start and begin to release the LNIATA's LMT Queues at the configured interval. To stop the **Sabre RL DX Releaser Tool**, press "q" or "Q" key followed by the "Enter" key.

A screenshot of a Windows command prompt window titled "releaser.bat 30 053842 aas 4fe41f printerTAs.txt". The window shows the execution of the "releaser.bat" command. The output includes a password prompt, status messages like "Printer Releaser running..." and "Signed in using ID 1111...", and a confirmation to release PTR 70513A every 30 seconds. It then displays a series of log entries showing the release of printer 123ABC at various times on Sep 25, 2019, with "NO MSGS" reported between releases. The window has standard Windows window controls (minimize, maximize, close) in the top right corner.

```
releaser.bat 30 053842 aas 4fe41f printerTAs.txt
C:\Sabre RL DX Releaser Tool>releaser.bat 30 1111 A1B1 123ABC printerTAs.txt
Enter password:*****
*
Printer Releaser running...
Signed in using ID 1111...
Press q to exit

Now releasing PTR 70513A every 30 seconds.
Sep 25, 2019 12:50:32 PM - Released Printer 123ABC
NO MSGS
?
Sep 25, 2019 12:51:17 PM - Released Printer 123ABC
NO MSGS
?
Sep 25, 2019 12:52:02 PM - Released Printer 123ABC
NO MSGS
?
Sep 25, 2019 12:52:47 PM - Released Printer 123ABC
NO MSGS
?
Sep 25, 2019 12:53:32 PM - Released Printer 123ABC
NO MSGS
?
```